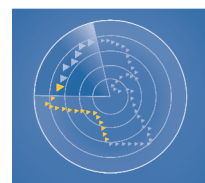


AL AHLI KUWAITI FUND

FACT SHEET - FEBRUARY 2022



الصندوق
الأهلي الكويتي
Al Ahli Kuwaiti Fund

Fund Objective

To achieve capital growth through investing in the shares of companies registered at the Kuwait Stock Exchange by realizing outstanding investment returns above the market average with an acceptable level of investment risk.

Executive Summary

Fund type:	Open-Ended
Subscription /Redemption:	Monthly
Launch date:	February 2003
Management fees:	1.50%
Manager:	Ahli Capital Investment Co.
Custodian:	Kuwait Clearing Co.
Minimum Subscription:	1,000 Unit
Next dealing date:	30 th MARCH 2022
Last dealing price:	KD 1.0027869 / Unit

Current Performance Summary

NAV	FEB'22	YTD'22
KD 1.00	3.30%	7.71%

Monthly Performance

Jan'22	Feb'22	Mar'22	Apr'22	May'22	Jun'22
4.27%	3.30%				
Jul'22	Aug'22	Sep'22	Oct'22	Nov'22	Dec'22

Historical Performance

2003	2004	2005	2006	2007	2008	2009
+37.80%	+2.70%	+57.50%	-15.40%	+32.50%	-27.90%	+0.90%
2010	2011	2012	2013	2014	2015	2016
+13.40%	-14.96%	+7.79%	+2.70%	-8.19%	-6.26%	-2.13%
2017	2018	2019	2020	2021	Since Inception	
+8.81%	+7.49%	+14.86%	-12.01%	27.01%	162.20%	

Returns inclusive of dividends / Bonus distributed

Profits Distributed

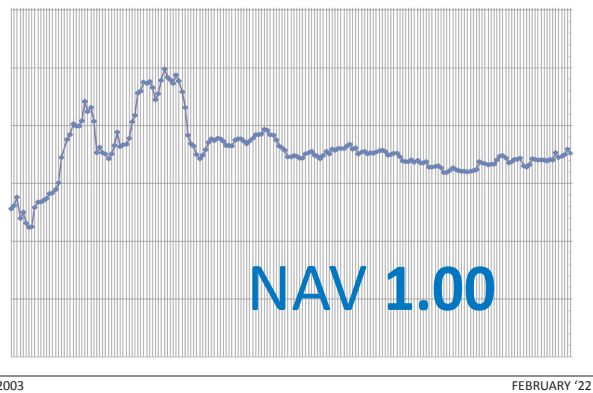
2003	2004	2005	2006	2007	2009
Cash	Cash	Cash	Bonus	Cash	Cash
KD0.190	KD0.070	KD0.105	15.60%	KD0.120	KD0.160
2010	2012	2017	2018	2019	Since Inception
Cash	Cash	Cash	Cash	Bonus	Cash
KD0.080	KD0.050	KD0.054	KD0.054	8%	KD0.943
					23.6%

AHLI CAPITAL INVESTMENT CO. K.S.C.C.
PO Box 1387, Safat 13014, Kuwait
E: acic_info@abkuwait.com
F: +965 2246 6187

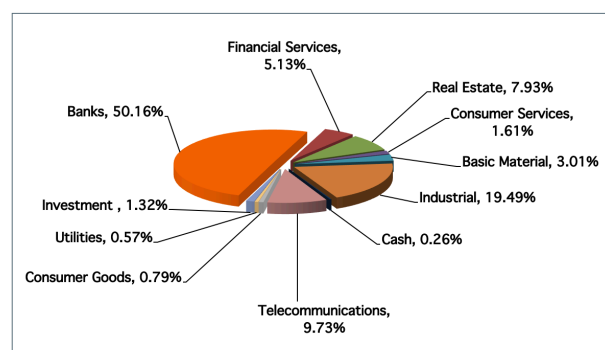
ahli-capital.com

1 832 832

Performance Chart Since Inception



Sector Allocation



Fund Top 5 Positions

1	KFH
2	Agility
3	NBK
4	ZAIN
5	Boubyan Bank

Fund Performance Analysis

Best month performance	+17.50%
Worst month performance	-22.43%
No. of up months	131
No. of down months	96
Average monthly gain	0.68%

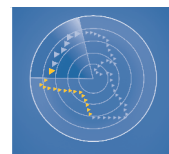
Market Performance

	MTD	YTD
Kuwait All Share Index	3.91%	8.44%
Kuwait Premier Index	3.84%	8.92%

أهلي كابيتال
AHLI CAPITAL

AL AHLI KUWAITI FUND

FACT SHEET



الصندوق
الأهلي الكويتي
Al Ahli Kuwaiti Fund

FEBRUARY 2022

Fund Review:

The fund's NAV for February 2022 was 1.0027869. While the respective index closings were as follows; The KSE All Share Index and the KSE Premier Index closed at 9408.89 and 8320.27 points respectively. The fund's performance for February was 3.30% compared to the KSE All Share Index of 3.91% and KSE Premier Index of 3.84%.

Market Review:

Kuwait's All Share Index closed 3.9% higher at 7,637.6 points in February 2022. Total volume traded decreased 15.3% MoM to 5.2BLN, number of deals rose 10.4% MoM to 253,862, and total value traded was up 0.7% MoM to KWD 1,298.5MM. Growth in the market was mainly driven by the banking and telecom sectors. The World Bank estimated Kuwait's real GDP to grow by about 5.3% in 2022 and 3.0% in 2023, after contracting 8.9% in 2020 due to the pandemic. Budget deficit for FY 2021-22 decreased 67% to KWD 3.0BLN on higher oil prices, as cited by the trade and industry minister. Kuwait's trade surplus with Japan surged 161.1% from a year earlier to JPY 59.5BLN in January 2022, up for the 10th consecutive month. Growth was fueled by robust exports, according to government data. Kuwait's overall exports to Japan also soared 98.7% YoY to JPY 69.8BLN for the 10th straight month of expansion. Its crude oil exports to Japan in January 2022 surged 49.9% YoY to 6.66MM barrels for the fifth straight monthly expansion. Kuwait's Bourse chief expects to launch a commercial sukuk and bonds market in 2022. The government owes KWD 2.35BLN in late payments to public entities due to lack of liquidity in the Treasury's unified account, as per the finance ministry. The Central Bank of Kuwait (CBK) reported that broad money supply (M2) declined 0.6% to KWD 38.9BLN (USD 128.0BLN) in December 2021. Moreover, consumer spending

of citizens and residents swelled 34% YoY to KWD 34.3BLN in 2021. Total deposits fell to KWD 44.561BLN in 2021 from KWD 45.275BLN in 2020, as per recent data by CBK.

Disclaimer:

This document is prepared for general circulation and is circulated for general information only. This document is not an invitation to subscribe to units of any investment fund or program therein. Past performance is not a guide to future returns. All the information contained in this document is believed to be reliable but may be inaccurate or incomplete. A full explanation of the characteristics of the investment is given in the prospectus. Any opinions stated are honestly held but are not guaranteed. The forecasts and material contained herein are for illustrative purposes only and are not to be relied upon as advice or interpreted as a recommendation. This document is meant for financial promotion and does not provide you with all the facts you need to make an informed decision about investing and hence is not intended to constitute investment advice. The information provided should not be considered as a recommendation or solicitation to purchase, sell or hold these securities. It should also not be assumed that any investment in these securities was or will be, profitable. The use of any information set out in this document is entirely at the recipient's own risk. Prospective investors are advised to seek independent professional advice to understand all attendant risks attached to investments in the Fund.