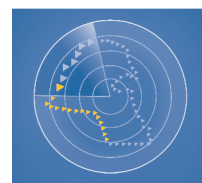


AL AHLI KUWAITI FUND FACT SHEET - JUNE 2022



الصندوق
الأهلي الكويتي
Al Ahli Kuwaiti Fund

Fund Objective

To achieve capital growth through investing in the shares of companies registered at the Kuwait Stock Exchange by realizing outstanding investment returns above the market average with an acceptable level of investment risk.

Executive Summary

Fund type:	Open-Ended
Subscription /Redemption:	Monthly
Launch date:	February 2003
Management fees:	1.50%
Manager:	Ahli Capital Investment Co.
Custodian:	Kuwait Clearing Co.
Minimum Subscription:	1,000 Unit
Next dealing date:	July 28 th , 2022
Last dealing price:	KD 0.9986949 / Unit

Current Performance Summary

NAV	JUNE'22	YTD'22
KD 0.998	-6.35%	7.27%

Monthly Performance

Jan'22	Feb'22	Mar'22	Apr'22	May'22	Jun'22
4.27%	3.30%	7.21%	6.16%	-6.56%	-6.35%
Jul'22	Aug'22	Sep'22	Oct'22	Nov'22	Dec'22

Historical Performance

2003	2004	2005	2006	2007	2008	2009
+37.80%	+2.70%	+57.50%	-15.40%	+32.50%	-27.90%	+0.90%
2010	2011	2012	2013	2014	2015	2016
+13.40%	-14.96%	+7.79%	+2.70%	-8.19%	-6.26%	-2.13%
2017	2018	2019	2020	2021	Since Inception	
+8.81%	+7.49%	+14.86%	-12.01%	+27.01%	161.13%	

Returns inclusive of dividends / Bonus distributed

Profits Distributed

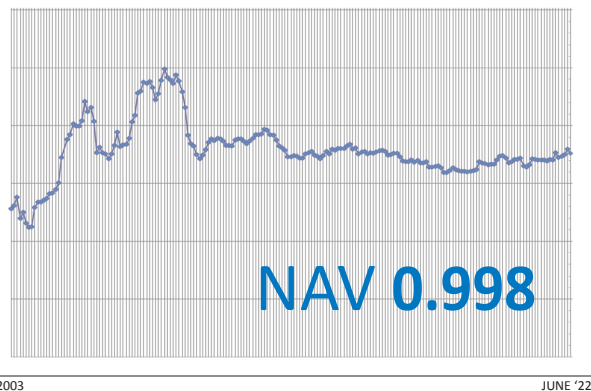
2003	2004	2005	2006	2007	2009
Cash	Cash	Cash	Bonus	Cash	Cash
KD0.190	KD0.070	KD0.105	15.60%	KD0.120	KD0.160
2010	2012	2017	2018	2019	Since Inception
Cash	Cash	Cash	Cash	Bonus	Cash
KD0.080	KD0.050	KD0.054	KD0.054	8%	KD0.943
					23.6%

AHLI CAPITAL INVESTMENT CO. K.S.C.C.
PO Box 1387, Safat 13014, Kuwait
E: acic_info@abkuwait.com
F: +965 2246 6187

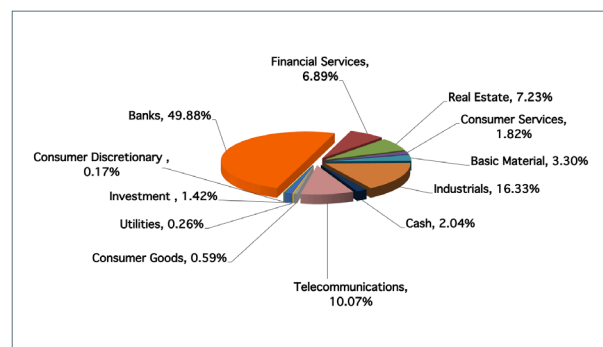
ahli-capital.com

1 832 832

Performance Chart Since Inception



Sector Allocation



Fund Top 5 Positions

1	NBK
2	KFH
3	Zain
4	Agility
5	Boubyan Bank

Fund Performance Analysis

Best month performance	+17.50%
Worst month performance	-22.43%
No. of up months	98
No. of down months	97
Average monthly gain	0.69%

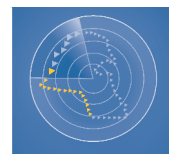
Market Performance

	MTD	YTD
Kuwait All Share Index	-5.30%	5.19%
Kuwait Premier Index	-4.99%	7.91%

أهلي كابيتال
AHLI CAPITAL

AL AHLI KUWAITI FUND

FACT SHEET



الصندوق
الأهلي الكويتي
Al Ahli Kuwaiti Fund

June 2022

Fund Review:

The fund's NAV for June 2022 was 0.9986949. While the respective index closings were as follows; The KSE All Share Index and the KSE Premier Index closed at 7408.57 and 8243.16 points respectively. The fund's performance for June was -6.35% compared to the KSE All Share Index of -5.30% and KSE Premier Index of -4.99%.

Market Review:

Kuwait's All Share Index closed 5.3% MoM lower at 7,408.57 points in June 2022. The total volume traded decreased 17.9% MoM to 4.2BLN, number of deals declined 11.9% MoM to 271,044, and total value traded was down 24.3% MoM to KWD 1,213.4MM. A fall in the market was mainly driven by the financial services and industrials sectors. The Central Bank of Kuwait (CBK) reported that broad money supply (M2) increased to KWD 41.5BLN in April 2022 from KWD 40.6BLN in March 2022. CBK raised the discount rate by 0.25% from 2.00% to 2.25% in June 2022. It also changed the rates of monetary policy instruments by different percentages for the entire interest rate yield curve, including repurchases (repo), CBK bonds and tawarruq, term deposits, direct intervention instruments, and public debt instruments. Kuwait's crude oil exports to Japan climbed 2.2% YoY to 5.55MM barrels in May 2022. Kuwait, Japan's fourth biggest oil provider, supplied 6.9% of the nation's total crude imports, as per the Japanese Natural Resources and Energy Report. Kuwait's May 2022 trade surplus with Japan increased more than 3x compared to the same period last year, i.e., up 202.7% YoY, rising for the 14th consecutive month. According to MEED, the four Gulf OPEC countries, including Kuwait, are expected to realize unexpected gains due to the Russia-Ukraine crisis and would build wealth of at least USD

100.0BLN in FY22, i.e., 10% of the expected GDP of the four countries. After eight consecutive years of deficits, the Ministry of Finance is hopeful Kuwait will generate surplus cash at the end of the current fiscal year, as the liquidity level of the public treasury is finally boosted by oil revenues.

Disclaimer:

This document is prepared for general circulation and is circulated for general information only. This document is not an invitation to subscribe to units of any investment fund or program therein. Past performance is not a guide to future returns. All the information contained in this document is believed to be reliable but may be inaccurate or incomplete. A full explanation of the characteristics of the investment is given in the prospectus. Any opinions stated are honestly held but are not guaranteed. The forecasts and material contained herein are for illustrative purposes only and are not to be relied upon as advice or interpreted as a recommendation. This document is meant for financial promotion and does not provide you with all the facts you need to make an informed decision about investing and hence is not intended to constitute investment advice. The information provided should not be considered as a recommendation or solicitation to purchase, sell or hold these securities. It should also not be assumed that any investment in these securities was or will be, profitable. The use of any information set out in this document is entirely at the recipient's own risk. Prospective investors are advised to seek independent professional advice to understand all attendant risks attached to investments in the Fund.

AHLI CAPITAL INVESTMENT CO. K.S.C.C.
PO Box 1387, Safat 13014, Kuwait
E: acic_info@abkuwait.com
F: +965 2246 6187

ahli-capital.com

1 832 832

