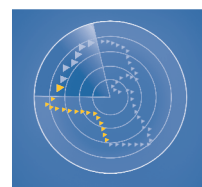


# AL AHLI KUWAITI FUND

## FACT SHEET - AUGUST 2022



الصندوق  
الأهلي الكويتي  
Al Ahli Kuwaiti Fund

### Fund Objective

To achieve capital growth through investing in the shares of companies registered at the Kuwait Stock Exchange by realizing outstanding investment returns above the market average with an acceptable level of investment risk.

### Executive Summary

Fund type:	Open-Ended
Subscription /Redemption:	Monthly
Launch date:	February 2003
Management fees:	1.50%
Manager:	Ahli Capital Investment Co.
Custodian:	Kuwait Clearing Co.
Minimum Subscription:	1,000 Unit
Next dealing date:	September 29 <sup>th</sup> , 2022
Last dealing price:	KD 0.9513567 / Unit

### Current Performance Summary

NAV	AUGUST'22	YTD'22
KD 0.951	-0.47%	12.41%

### Monthly Performance

Jan'22	Feb'22	Mar'22	Apr'22	May'22	Jun'22
4.27%	3.30%	7.21%	6.16%	-6.56%	-6.35%
Jul'22	Aug'22	Sep'22	Oct'22	Nov'22	Dec'22
5.28%	-0.47%				

### Historical Performance

2003	2004	2005	2006	2007	2008	2009
+37.80%	+2.70%	+57.50%	-15.40%	+32.50%	-27.90%	+0.90%
2010	2011	2012	2013	2014	2015	2016
+13.40%	-14.96%	+7.79%	+2.70%	-8.19%	-6.26%	-2.13%
2017	2018	2019	2020	2021	Since Inception	
+8.81%	+7.49%	+14.86%	-12.01%	+27.01%	+173.63%	

Returns inclusive of dividends / Bonus distributed

### Profits Distributed

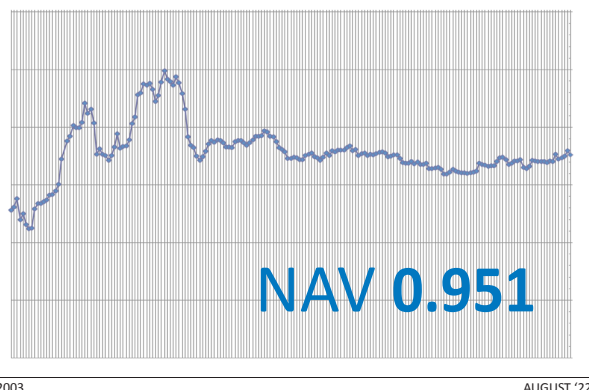
2003	2004	2005	2006	2007	2009
Cash	Cash	Cash	Bonus	Cash	Cash
KD 0.190	KD 0.070	KD 0.105	15.60%	KD 0.120	KD 0.160
KD 0.060					
2010	2012	2017	2018	2019	2021
Cash	Cash	Cash	Cash	Bonus	Bonus
KD 0.080	KD 0.050	KD 0.054	KD 0.054	8%	10%
Since Inception					
Cash	Bonus				
KD 0.943	33.60%				

AHLI CAPITAL INVESTMENT CO. K.S.C.C.  
PO Box 1387, Safat 13014, Kuwait  
E: acic\_info@abkuwait.com  
F: +965 2246 6187

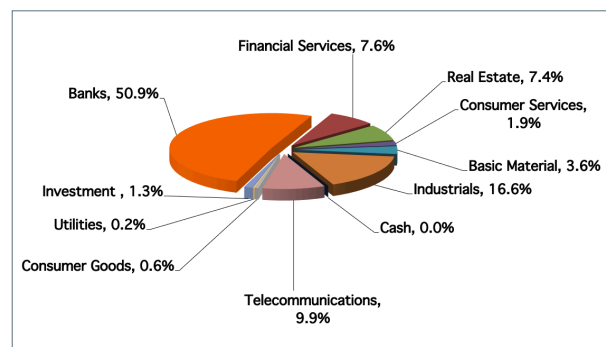
ahli-capital.com

1 832 832

### Performance Chart Since Inception



### Sector Allocation



### Fund Top 5 Positions

1	NBK
2	KFH
3	Zain
4	Boubyan Bank
5	Agility

### Fund Performance Analysis

Best month performance	+17.50%
Worst month performance	-22.43%
No. of up months	99
No. of down months	98
Average monthly gain	0.88%

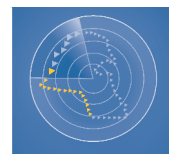
### Market Performance

	MTD	YTD
Kuwait All Share Index	-0.10%	9.45%
Kuwait Premier Index	-0.10%	12.51%

أهلي كابيتال  
AHLI CAPITAL

# AL AHLI KUWAITI FUND

## FACT SHEET



الصندوق  
الأهلي الكويتي  
Al Ahli Kuwaiti Fund

August 2022

### Fund Review:

The fund's NAV for August 2022 was 0.9513567. While the respective index closings were as follows; The KSE All Share Index and the KSE Premier Index closed at 7709.05 and 8594.60 points respectively. The fund's performance for August was -0.47% compared to the KSE All Share Index of -0.10% and KSE Premier Index of -0.10%.

### Market Review:

Kuwait's All Share Index closed 0.1% MoM lower at 7,709.1 points in August 2022. The total volume traded increased 80.3% MoM to 6.2BLN, number of deals climbed 43.3% MoM to 270,461, and total value traded increased 34.1% MoM to KWD 1.2BLN. A marginal decline in the market was mainly attributed to the financial services and industrials sectors. The Central Bank of Kuwait (CBK) reported that broad money supply (M2) increased to KWD 41.73BLN in July 2022 from KWD 41.69BLN in June 2022. CBK raised the discount rate by 0.25% from 2.50% to 2.75% in August 2022. Moreover, it changed the rates of monetary policy instruments, including repurchases (repo), CBK bonds and tawarruq, term deposits, direct intervention instruments, and public debt instruments, by different percentages for the entire interest rate yield curve. The annual consumer price inflation (CPI) rate increased 4.24% in July 2022 compared to July 2021, as reported by the Central Statistical Bureau; on a monthly basis, the CPI rose to 125.5 by 0.08%, mainly due to high prices of major groups in the movement of the indices. Kuwait's July 2022 trade surplus with Japan increased 102.3% to JPY 101.2BLN compared to the same period last year; it has been rising consecutively for 16 months. Moreover, Kuwait's overall exports to Japan swelled 91.9% YoY to JPY 121.2BLN (USD 902.0MM); this marked the rise in exports for the 16th straight month. Imports from Japan rose for three months in a row; it surged 52.4% to JPY 20.0BLN (USD

149.0MM) in July 2022. Moody's Investors Service (Moody's) affirmed the government of Kuwait's long-term local and foreign currency issuer ratings at A1, with a stable outlook. The ratings are based on Moody's assessment that Kuwait's balance sheet and fiscal buffers will remain strong in the foreseeable future, preserving macroeconomic and external stability and anchoring the credit profile. Balanced against this key credit strength is the persistently challenging political environment that limits the prospects for reforms, reducing the vulnerability of the economy and government finances to long-term carbon transition risks.

### Disclaimer:

This document is prepared for general circulation and is circulated for general information only. This document is not an invitation to subscribe to units of any investment fund or program therein. Past performance is not a guide to future returns. All the information contained in this document is believed to be reliable but may be inaccurate or incomplete. A full explanation of the characteristics of the investment is given in the prospectus. Any opinions stated are honestly held but are not guaranteed. The forecasts and material contained herein are for illustrative purposes only and are not to be relied upon as advice or interpreted as a recommendation. This document is meant for financial promotion and does not provide you with all the facts you need to make an informed decision about investing and hence is not intended to constitute investment advice. The information provided should not be considered as a recommendation or solicitation to purchase, sell or hold these securities. It should also not be assumed that any investment in these securities was or will be, profitable. The use of any information set out in this document is entirely at the recipient's own risk. Prospective investors are advised to seek independent professional advice to understand all attendant risks attached to investments in the Fund.

AHLI CAPITAL INVESTMENT CO. K.S.C.C.  
PO Box 1387, Safat 13014, Kuwait  
E: acic\_info@abkuwait.com  
F: +965 2246 6187

ahli-capital.com

1 832 832

