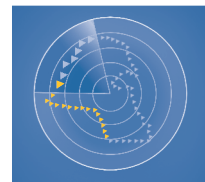


# AL AHLI KUWAITI FUND

## FACT SHEET - AUGUST 2021



الصندوق  
الأهلي الكويتي  
Al Ahli Kuwaiti Fund

### Fund Objective

To achieve capital growth through investing in the shares of companies registered at the Kuwait Stock Exchange by realizing outstanding investment returns above the market average with an acceptable level of investment risk.

### Executive Summary

Fund type:	Open-Ended
Subscription /Redemption:	Monthly
Launch date:	February 2003
Management fees:	1.50%
Manager:	Ahli Capital Investment Co.
Custodian:	Kuwait Clearing Co.
Minimum Subscription:	1,000 Unit
Next dealing date:	29 <sup>th</sup> SEPTEMBER 2021
Last dealing price:	KD 0.9162417 / Unit

### Current Performance Summary

NAV	AUG'21	YTD'21
KD 0.916	+2.57%	+25.00%

### Monthly Performance

Jan'21	Feb'21	Mar'21	Apr'21	May'21	Jun'21
+4.86%	-3.27%	+3.85%	+7.90%	+1.67%	+2.73%
Jul'21	Aug'21	Sep'21	Oct'21	Nov'21	Dec'21
+2.66%	+2.57%				

### Historical Performance

2003	2004	2005	2006	2007	2008	2009
+37.80%	+2.70%	+57.50%	-15.40%	+32.50%	-27.90%	+0.90%
2010	2011	2012	2013	2014	2015	2016
+13.40%	-14.96%	+7.79%	+2.70%	-8.19%	-6.26%	-2.13%
2017	2018	2019	2020	Since Inception		
+8.81%	+7.49%	+14.86%	-12.01%	+139.57%		

Returns inclusive of dividends / Bonus distributed

### Profits Distributed

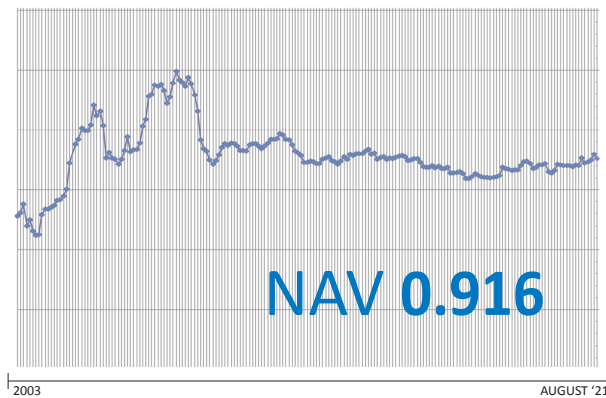
2003	2004	2005		2006	2007	2009
Cash	Cash	Cash	Bonus	Cash	Cash	Cash
KD 0.190	KD 0.070	KD 0.105	15.60%	KD 0.120	KD 0.160	KD 0.060
2010	2012	2017	2018	2019	Since Inception	
Cash	Cash	Cash	Cash	Bonus	Cash	Bonus
KD 0.080	KD 0.050	KD 0.054	KD 0.054	8%	KD 0.943	23.6%

AHLI CAPITAL INVESTMENT CO. K.S.C.C.  
PO Box 1387, Safat 13014, Kuwait  
E: acic\_info@abkuwait.com  
F: +965 2246 6187

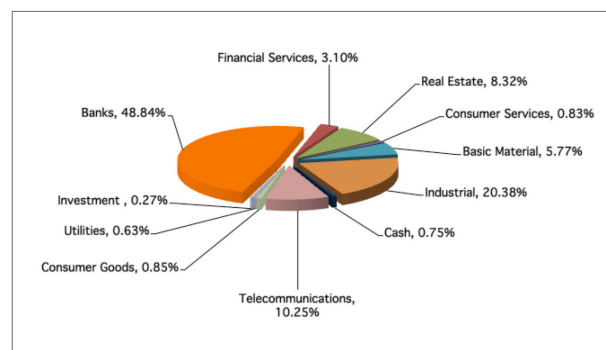
ahli-capital.com

1 832 832

### Performance Chart Since Inception



### Sector Allocation



### Fund Top 5 Positions

1	Agility
2	KFH
3	NBK
4	ZAIN
5	Boubyan Bank

### Fund Performance Analysis

Best month performance	+17.50%
Worst month performance	-22.43%
No. of up months	127
No. of down months	95
Average monthly gain	+0.57%

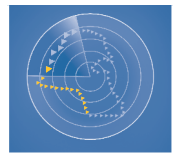
### Market Performance

	MTD	YTD
Kuwait All Share Index	3.13%	22.37%
Kuwait Premier Index	3.73%	22.81%

أهلي كابيتال  
AHLI CAPITAL

# AL AHLI KUWAITI FUND

## FACT SHEET



الصندوق  
الأهلي الكويتي  
Al Ahli Kuwaiti Fund

AUGUST 2021

### Fund Review:

The Fund's NAV for AUGUST 2021 was 0.9162417 while the respective index closings were as follow; the KSE All Share Index and the KSE Premier Index closed at 6786.81 and 7431.56 points respectively.

Al Ahli Kuwaiti Fund performance was +2.57% MTD compared to KSE All Share Index of 3.13% MTD and KSE Premier Index of 3.73% MTD.

### Market Review:

Kuwait's All Share Index closed 3.8% higher at 6,828.4 points in August 2021. The total traded volume increased by 56.8% MoM to 6.8bn, the number of deals rose by 37.6% MoM to 245,628, and the total value traded jumped by 69.3% MoM to KWD1.3bn. The growth in the market was mainly driven by consumer discretionary and banking sector. Kuwait's budget deficit increased by 174.8% in 2020-21 to KWD10.8bn (USD35.5bn), the highest in the country's history, according to the finance ministry. Revenue fell by 38.9% to KWD10.5bn during the same period, while expenditure increased by 0.7% to KWD21.3bn. Kuwait's trade surplus with Japan more than tripled from a year earlier to USD457.0mn in July 2021, aided by robust exports. The trade surplus surged by 203.3%, up for the fourth consecutive month. Kuwait's overall exports to Japan soared by 160.0% YoY to USD576.0mn, up for fourth month in a row. Imports from Japan also swelled by 68.3% to USD120.0mn for the fifth straight month of expansion. Data provided by the Central Bank of Kuwait (CBK) showed that official reserves decreased by 1.7% YoY to KWD13.7bn in June 2021 from KWD14.0bn in June 2020. Kuwait's monetary gold position remained unchanged at

KWD31.7mn in June 2021. The IMF's reserve position rose by 9.2% YoY to KWD233.9mn in June 2021 from KWD214.2mn in June 2020, while special drawing rights rose by 1.6% YoY to KWD573.4mn. CBK's total assets decreased by 1.7% YoY to KWD13.0bn in June 2021 from KWD13.3bn in June 2020.

### Disclaimer:

This document is prepared for general circulation and is circulated for general information only. This document is not an invitation to subscribe to units of any investment fund or program therein. Past performance is not a guide to future returns. All the information contained in this document is believed to be reliable but may be inaccurate or incomplete. A full explanation of the characteristics of the investment is given in the prospectus. Any opinions stated are honestly held but are not guaranteed. The forecasts and material contained herein are for illustrative purposes only and are not to be relied upon as advice or interpreted as a recommendation. This document is meant for financial promotion and does not provide you with all the facts you need to make an informed decision about investing and hence is not intended to constitute investment advice. The information provided should not be considered as a recommendation or solicitation to purchase, sell or hold these securities. It should also not be assumed that any investment in these securities was or will be, profitable. The use of any information set out in this document is entirely at the recipient's own risk. Prospective investors are advised to seek independent professional advice to understand all attendant risks attached to investments in the Fund.

AHLI CAPITAL INVESTMENT CO. K.S.C.C.  
PO Box 1387, Safat 13014, Kuwait  
E: acic\_info@abkuwait.com  
F: +965 2246 6187

ahli-capital.com

1 832 832

  
أهلي كابيتال  
AHLI CAPITAL